

RESOLUTION No. 12- 30

WHEREAS, Olmsted County, through 2011's Resolution No. 11-38, declared its intention to voluntarily participate in the Minnesota Council on Local Results and Innovation (hereinafter "the Council") Standard Performance Measures Program.

WHEREAS, Olmsted County has adopted and implemented 12 performance measures, as developed by the Council, in the topic areas of

- Public Safety:
 1. Part I and Part II Crimes.
- Probation/Corrections:
 2. Percentage of Adult Offenders with a New Felony Conviction within 3 Years of Discharge.
- Public Works:
 3. Hours to Plow Complete System during a Snow Event.
 4. Average County Pavement Condition Rating.
- Public Health:
 5. Life Expectancy Generally by Sex and Race.
- Social Services:
 6. Workforce Participation Rate (WPR) among Minnesota Family Investment Program (MFIP) and Diversionary Work Program (DWP) Recipients.
 7. Percentage of Children where there is a Recurrence of Maltreatment within 12 Months following an Intervention.
- Taxation:
 8. Level of Assessment Ratio.
- Elections:
 9. Accuracy of Post-Election Audit.
- Veterans' Services:
 10. Veterans Confirming Benefits Questions Answered.
- Parks:
 11. Citizens' Rating of County Park Quality.

- Library:
 12. Number of annual visits per 1,000 residents; and

WHEREAS, Olmsted County is in the process of implementing a local performance measurement system as developed by the Council; and

WHEREAS, Olmsted County will report the results of the 12 adopted measures to its residents before the end of the calendar year through publication, direct mailing, posting on the County's website, or through a public hearing at which the budget and levy will be discussed and public input allowed;

WHEREAS, Olmsted County will survey its residents by the end of the calendar year on the services included in the performance benchmarks, in accordance with the survey requirement guidance available through the Office of the State Auditor; and

WHEREAS, a county electing to participate in the standard performance measures program for 2012 is eligible for a reimbursement of \$0.14 per capita in local government aid, not to exceed \$25,000, and is also exempt from levy limits under sections 275.70 to 275.74 for taxes payable in 2013, if levy limits are in effect.

NOW, THEREFORE, BE IT RESOLVED, Olmsted County chooses to participate in the Standard Performance Measures Program, declares its intention to fulfill the requirements of the program, including filing a report with the Office of the State Auditor by July 1, 2012. The report shall consist of a copy of this resolution and the actual results of the performance measures adopted by the County.

Dated at Rochester, Minnesota this 26th day of June, 2012.

OLMSTED COUNTY BOARD OF COMMISSIONERS



Ken Brown, Chairperson

ATTEST:



Richard G. Devlin, Clerk/Administrator



Standard Performance Measures Program Report—Year 2011 Results

“ A DYNAMIC, WORLD-CLASS COUNTY DELIVERING EXCELLENCE EVERYDAY ” JULY 1, 2012

**IN THIS
REPORT:
PERFORMANCE
MEASURES/RESULTS**

Public Safety 2
• Part I and
Part II Crimes

**Probation/
Corrections** 3
• Adult Offenders
- New Felony
Convictions

Public Works 3
• Snow Event
Plow Hours
• Pavement
Condition Rating

Public Health 4
• Life Expectancy

Social Services 4
• Workforce
Participation Rate
• Child Maltreat-
ment Recurrence

Taxation 5
• Assessment
Ratio

Elections 5
• Post-Election
Audit Accuracy

Veterans' Services 6
• Benefits Ques-
tions Answered

Parks 6-7
• County Park
Quality

Library 8
• Annual Visits

**Contact
Information** 8

Olmsted County Participates in Performance Measures Program

Current Status

Performance measurement and reporting are at the core of a well-functioning county government. We have the opportunity to continue our voluntary participation in the Minnesota Council on Local Results and Innovation (Council)—Standard Performance Measures Program. Olmsted County Board of Commissioners approved this participation, through Resolution 12-38, on June 26, 2012. We will be sharing the results with Olmsted County Residents before the end of the year. Program reimbursement payments will make a county-wide citizens' survey possible later this year.

Several of the twelve model measures developed by the Council are measures we have been tracking through our own Managing for Results (M4R) Strategic Management System. Please see the contents of this report for details about these measures and results.

Brief Background

In 2010, the Legislature created the Council on Local Results and Innovation (Council). In February 2011, the Council released a standard set of performance measures for cities and counties that will aid residents, taxpayers, and state and local elected officials in determining the efficacy of cities and counties in providing services and measure residents' opinions of those services.

In June 2011, Olmsted County Board of Commissioners declared its original intent to participate in the Council's Standard Performance Measures Program through Resolution No. 11-38.

In February 2012, the Council created a comprehensive performance measurement system for counties to implement in 2012. Again, counties that choose to participate in the new Standard Performance Measures Program are eligible for a reimbursement of \$0.14 per capita in local government aid, not to exceed \$25,000, and are exempt from levy limits under sections 275.70 to 275.74 for taxes payable in 2013, if levy limits are in effect.

Types of Model Program Measures

Outcome—describe the results of service efforts. Used to help assess whether the outcome goals/targets are being met.

Output—detail the units produced, goods or service provided, or people served.

Public Safety-Performance Measure 1

Olmsted County, Minnesota, Crime Statistics

(Includes the cities of Byron, Dover, Eyota, Oronoco and Stewartville;
excludes the City of Rochester)



LARCENY.

Illegal taking and carrying away of personal property belong to another with the purpose of depriving the owner of its possession.

Measure Type: Outcome.

Outcome Goal/Target: 10% decrease in Part I and Part II Crimes.

Results: 36% increase in Part I Crimes. 2% increase in Part II Crimes.

Determining why crime rates fluctuate as they do is difficult to pinpoint. There are many factors to consider, including: the economy, incarceration statistics, policing, social programs, demographics, opportunity and even age..

DUI.

Driving under the influence of alcohol and/or other drugs.

Part I Crimes	2010	2011
Homicide	0	0
Rape	12	7
Robbery	5	2
Aggravated Assault	24	17
Burglary	82	151
Larceny	194	261
Auto Theft	28	36
Arson	5	0
Totals	350	474

Part II Crimes	2010	2011
Assault	85	82
Forgery	12	15
Fraud	52	41
Stolen Property	5	5
Vandalism	101	125
Weapons	7	7
Prostitution	0	0
Other Sex Offense	13	21
Narcotics	75	47
Gambling	0	0
Family	10	4
DUI	150	174
Liquor Laws	31	28
Disorderly	41	34
Other	137	148
Totals	719	735

Probation/Corrections-Performance Measure 2



Percent of Adult Offenders **without** a New Felony Conviction within 3 Years of Discharge

Probation: A court ordered sanction placing certain conditions on a convicted offender, which could include some local jail or workhouse time, but allowing the offender to remain in the community under the supervision of a probation officer.

Supervised Release: Status of a convicted felon who has been released from a state correctional facility. Certain conditions must be met in order to remain in the community.

**DFO.
Dodge,
Fillmore, and
Olmsted**

Reduced Recidivism Outcome Goals/Targets:	2010	2011
85% of probationers with a felony case remain free of felony conviction within 3 years of discharge from supervision.	DFO Probation 93% Results: Target Exceeded. (n=261)	DFO Probation 94% Results: Target Exceeded. (n=248)
75% of supervised releasees remain free of felony conviction within 3 years of discharge.	DFO Supervised Release 76% Target : Exceeded. (n=155)	DFO Supervised Release 74% Target : Unmet. (n=158)



Public Works-Performance Measures 3 and 4

3. Hours to Plow Complete System during a Snow Event Measure Type: Output. Results: Target Met.	2010 -11 Snow Season (41.3" of Snow)	2011-12 Snow Season (20.6" of Snow)
Outcome Goal/Target: Within 72 Hours	Within 72 Hours	Within 72 Hours

The County Public Works Department reports that 518 miles of roadway under Olmsted County's jurisdiction were plowed and/or sanded (based on each road's surfacing) within 72 hours of each snowfall that totaled 4" within a 6-8 hour period. This achievement is in compliance with the Olmsted County Snow and Ice Policy.

4. Average County Pavement Condition Rating Measure Type: Outcome. Results: Target Exceeded.	2010	2011
Outcome Goal/Target: Average PCI score of 72	74	74

The County Public Works Department is responsible for 518 miles of roadway. They utilize the Pavement Condition Index (PCI) to evaluate and prioritize upgrades and maintenance of the Highway System. Roads are scored from 0-100 (0 = Failed, 100 = Excellent) based on a number of different factors. The lower the score, the more intense the required maintenance, with reconstruction occurring on the lowest ranked roads.

Public Health-Performance Measure 5



Olmsted County Residents' Life Expectancy at Birth		2008—2010 Average
Measure Type: Outcome. Results: "Generally" exceeds State and U.S. Average Life Expectancy.		
Generally		82.4 Years
By Gender	Male	80.1 Years
	Female	84.4 Years
By Race	White	82.4 Years
	Non-White	75.2 Years

Life expectancy is estimated by current population and annual deaths. All non-white deaths only represented 4% of total deaths in Olmsted County. Data Source: US Census; Minnesota Department of Health (MDH) Center for Health Statistics—Interactive Queries.

Comparable Life Expectancies:

United States = 78.61 yrs.
State of Minnesota = 80.85 yrs.

Above data from electronic media, Minnesota Life Expectancy n.d. (no date), *Minnesota Life Expectancy*, Retrieved June 18, 2012, from <http://www.worldlifeexpectancy.com/usa/minnesota-life-expectancy>

MFIP. Minnesota

Family Investment Program

DWP.

Diversionary Work Program



Social Services-Performance Measures 6 and 7

6. Workforce Participation Rate (WPR)	Performance Year April 2011—March 2012
Measure Type: Outcome. Results: State Target Exceeded.	
Minnesota Threshold/Outcome Goal/Target = 39.8% Federal Threshold/Outcome Goal/Target = 50%	
Among MFIP and DWP Recipients	47.4%

Workforce Participation Rate (WPR) measures work participation for those considered "work ready". This includes DWP since this program is actually targeted at a quick (4-month) re-entry service model to get individuals back into the workforce and diverted from landing in MFIP—a longer term program.

7. Maltreatment Recurrence	2010	2011
Measure Type: Outcome. Results: Target Exceeded.		
Federal Threshold/Outcome Goal/Target (for no recurrence) = 94.6% or Greater		
Percentage of Children where there is NO recurrence of maltreatment within 6 months following an intervention, (Child and Family Services Review/CFSR Language).	100% n = 15	95.5% n = 22
Percentage of Children where there is recurrence of maltreatment within 6 months following an intervention, (State Standard Performance Measure Language)	0.0%	4.5%

The three major types of child maltreatment: Physical Abuse, Neglect (includes educational neglect), and Sexual Abuse.

Taxation-Performance Measure 8

* The Level of Assessment Ratio refers mainly to the median sales ratio which is highlighted in this chart. The Sales Ratio Criteria set forth by the Minnesota Department of Revenue is listed below.

LEVEL OF ASSESSMENT RATIO* - 2011 Assessment Sales Ratio Study -				
Property Type	Median	COD	PRD	# Sales
Residential	98.1 (Acceptable)	8.5 (Excellent)	100.9 (Acceptable)	1455
Commercial	92.4 (Acceptable)	15.1 (Acceptable)	106.8 (Regressive)	20
Apartment	97.5 (Acceptable)	8.8 (Excellent)	.99 (Progressive)	9
Agriculture	97.1 (Acceptable)	13.1 (Acceptable)	101.9 (Acceptable)	13

Median—compares sale prices against assessed values.

Coefficient of Dispersion (COD) - measures assessment uniformity.

Price Related Differential (PRD) - a **regressive** indicates that high value properties are under-appraised relative to low value properties and **progressive** indicates that lower priced properties are under-appraised.



Minnesota Department of Revenue: SALES RATIO CRITERIA—Outcome Goals/Targets			
Median	90-105% - Acceptable		
COD	0-10 Excellent	11-19 Acceptable	>20 Poor
PRD	97-102 Acceptable	< 97 Progressive	> 102 Regressive

Measure Type: Outcome.

Post-Election Audit Accuracy-Performance Measure 9

PERCENTAGE OF BALLOTS COUNTED ACCURATELY State General Election—2010		
Precinct	Outcome Goal/Target	Results
Rochester Ward 3 Precinct 5	Within one-half of one percent	No Adjustment/Difference 0.00% - Acceptable
Rochester W4 P7	Within one-half of one percent	0.00% - Acceptable
Rochester W6 P7	Within one-half of one percent	0.00% - Acceptable

Outcome Goal/Target: Voting system results reconciled against hand counts of precincts (randomly selected by canvassing board) need to be within one-half of one percent. Precincts with 400 or fewer cast ballots need to be within two votes. This does not include votes marked outside the vote targets on the ballot or votes marked by an unreadable manual marking device.

Veterans' Services-Performance Measure 10



Measure Type:
Output

Outcome Goal/Target:
90% of Veterans had their benefit information questions answered.

Veteran, Dependent, and Survivor Economic Stability			
Service	2009	2010	2011
Office Visits	2149	2076	2089
Phone/E-Mail Contacts	4653	4197	3981
Correspondence Received	3207	3660	3730
Benefit Forms Prepared	2564	2082	2307
New Client Records	486	564	458
Veteran's Administration Transportation	1020	987	898
Client Records Edited	23,399	20,302	16,007

The above data is simply a snapshot of service activity over a recent three-year period. Our Veterans' Office will be conducting a survey in July 2012 which will help assess the following state model performance measure: *Percentage of Veterans who had their questions answered when seeking benefit information from their County Veterans' Office.* This effort will bring us into compliance with program expectations for this Topic.

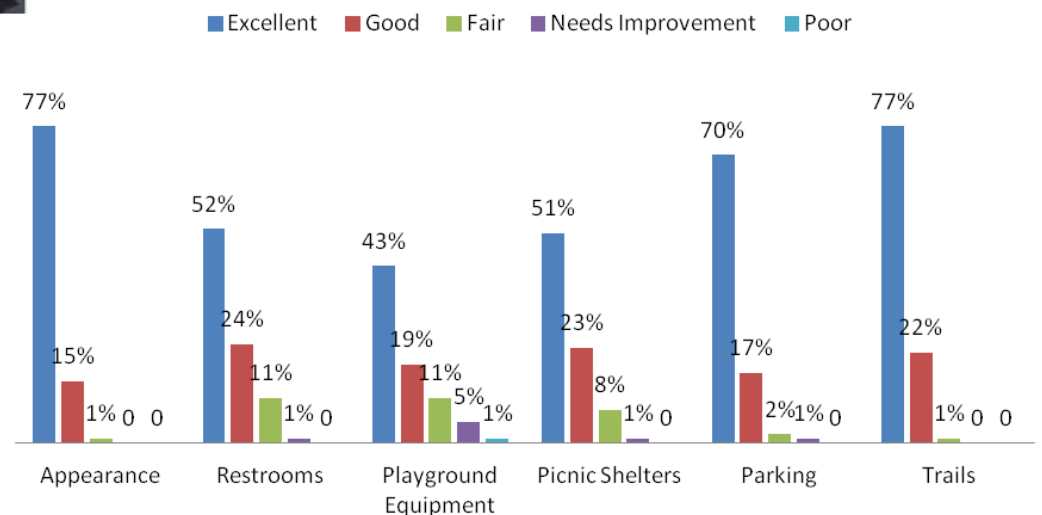
County Park Quality-Performance Measure 11



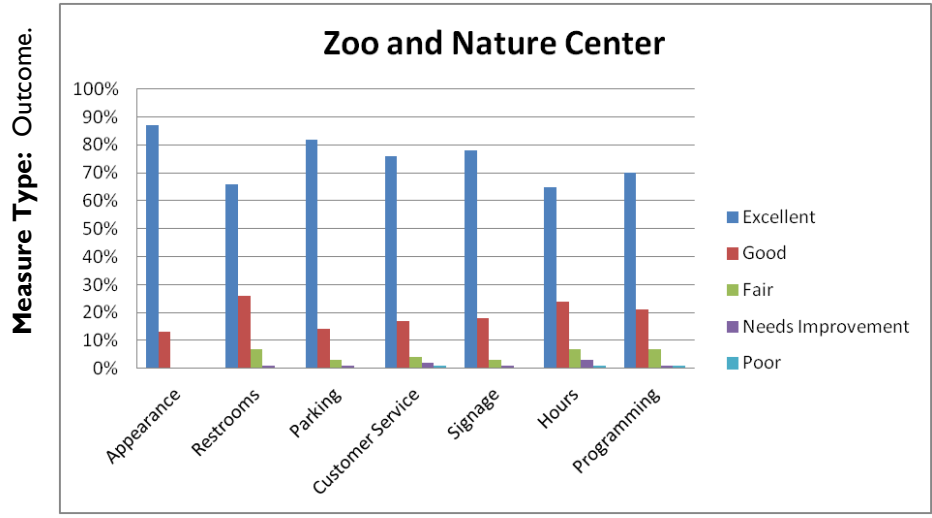
Oxbow Park—located in the Zumbro River Valley, the area offers ideal passive recreational opportunities such as hiking, camping, and nature study. The park derived its name in reference to the winding course of the river. Early settlers noted the river bent almost onto itself, forming a near circle that reminded them of an oxen harness, or "Oxbow". The park's total acreage, which includes the Zollman Zoo, has increased to over 620 acres since its establishment in 1967. Park Visitors were asked to comment on:

Survey information collected over a three-month period. Results based on 557 survey responses.

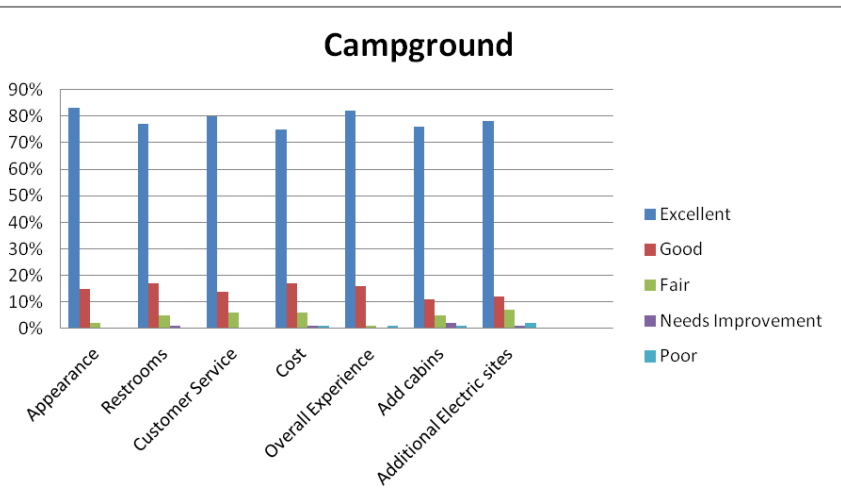
Park Grounds



Park Quality, continued



“90% or more of Visitors/ Survey Respondents rated our Zoo and Nature Center as ‘Excellent’ or ‘Good’”



“Over 80% of Campers/Survey Respondents rated their overall campground experience as ‘Excellent’”

Measure Type: Outcome.

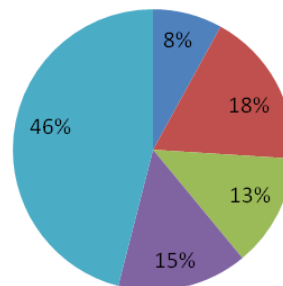


Helping Us Plan for Future Improvements

Top Suggestion:
46% of Survey Respondents suggested we Improve/Expand the Trail System.

Future Improvements

- Improve/Expand Trail system
- Improve/Expand Nature center
- Expand Environmental ed.
- Update Playground equipment
- Update Zoo Exhibits



Library-Performance Measure 12

Library Door Counts	
Library Door Count—MAIN	504,893
Library Door Count—Bookmobile	32,327
Library Door County—Stewartville	29,750
TOTAL DOOR COUNT FOR 2011	566,970

Divided By

Jurisdiction—2010 Census	
Olmsted County	144,248
Minus Chatfield	- 1,206
Minus Pine Island	- 703
Stewartville and Rochester Public Library Service Population	142,339

Equals

Number of Annual Library Visits per 1,000 Residents—2011	
Olmsted County (includes Bookmobile and Stewartville Library Door Counts)	3,983*
<p>Olmsted County's population is comprised of the County Seat and largest city—Rochester, and the smaller cities of Byron, Chatfield†, Dover, Eyota, Oronoco, Pine Island‡ and Stewartville. Not all of these smaller cities have a library, but many use the bookmobile services or are patrons of the Rochester Public Library and other neighboring Libraries.</p> <p>† Chatfield is in both Olmsted and Fillmore County. ‡ Pine Island is mainly in Goodhue County but extends into Olmsted County.</p>	

***That's almost 4 visits per resident per year!**

State of Minnesota Library Visits per Capita = 5.47

Institute of Museum and Library Services—Public Libraries Survey—Fiscal Year 2008:

Appendix A—Public Library State Ranking Tables (June 2010)

Contact Information:

Belinda Krenik

Director of Communications

& Strategic Planning

Administration

151 4th ST SE

Rochester MN 55904

Phone #: 507.328.6007 or

krenik.belinda@co.olmsted.mn.us

Bob Bendzick

Chief Financial Officer

Central Finance

151 4th ST SE

Rochester MN 55904

Phone #: 507.328.7679 or

bendzick.bob@co.olmsted.mn.us

