

STATE OF MINNESOTA

COUNTY OF HENNEPIN

CLERK OF THE BOARD


I, Deputy Clerk of the Board of the above named County, do hereby certify that I have compared the papers writing, to which this certificate is attached, with the original

Resolution No. 14-0231 adopted by the County Board of Commissioners on June 24, 2014

as the same appears of record and on file in the said Clerk of the Board's office, at the Government Center in said Hennepin County, and find the same to be true and correct copy thereof.

IN TESTOMONY WHEREOF, I have hereunto set my hand and affixed the seal of said County at the City of Minneapolis, this 30^h day of June A.D. 2014

YOLANDA C CLARK
Deputy Clerk of the County Board

by: 
Deputy or Clerk of the County Board

Hennepin County, Minnesota

RESOLUTION NO. 14-0231

[2014]



www.hennepin.us

The following Resolution was offered by Libraries, Technology & General Govt Committee:

WHEREAS, the Minnesota Legislature created the Council on Local Results and Innovation in 2010; and

WHEREAS, the Council on Local Results and Innovation released a standard set of eleven performance measures for counties that will aid residents, taxpayers, and state and local elected officials in determining the efficacy of counties in providing services and measure residents' opinion of those services; and

WHEREAS, Hennepin County (the County) is committed to performance management and reporting; and

WHEREAS, the County has implemented a local performance measurement system as developed by the Council on Local Results and Innovation; and

WHEREAS, the County does not have jurisdiction for Parks and, therefore, will not participate in the Parks' performance measurement in 2014; and

WHEREAS, the County has adopted and implemented the minimum ten performance measures for counties developed by the Council on Local Results and Innovation; and

WHEREAS, a county that elects to participate in the standard measures program for 2014 may be eligible for a reimbursement of \$.014 per capita in government aid, not to exceed \$25,000; therefore

BE IT RESOLVED, that the County will publish the 2013 results of the ten adopted performance measures on the County's website by the end of the 2014 calendar year; and

BE IT FURTHER RESOLVED, that the Hennepin County Board of Commissioners authorizes staff to notify the Office of the State Auditor by July 1, 2014 of Hennepin County's commitment to participate in the 2014 Performance Measurement Program.

The question was on the adoption of the resolution and there were 7 YEAS and 0 NAYS, as follows:

County of Hennepin Board of County Commissioners	YEAS	NAYS	ABSTAIN	ABSENT
Mike Opat	X			
Peter McLaughlin	X			
Randy Johnson	X			
Linda Higgins	X			
Marion Greene	X			
Jan Callison	X			
Jeff Johnson	X			

RESOLUTION ADOPTED ON 6/24/2014

A handwritten signature in black ink that reads "YC Clark". The signature is written in a cursive style with a large, looped initial "Y".

ATTEST:

Deputy/Clerk to the County Board

Hennepin County

Model Performance Measures for Counties

The following are the recommended model measures of performance outcomes for counties, with alternatives provided in some cases. Key output measures are also suggested for consideration by local county officials.

1. Public Safety:

- **Part I and II crime rate**

- **Part I crimes** include murder, rape, aggravated assault, burglary, larceny, motor vehicle theft, and arson.
- **Part II crimes** include other assaults, forgery/counterfeiting, embezzlement, stolen property, vandalism, weapons, prostitution, other sex offenses, narcotics, gambling, family/children crime, Driving Under the Influence, liquor laws, disorderly conduct, and other offenses.

Offenses, Clearances, Percent Cleared and Crime Rate by Agency - 2009				
County/City		Grand Total	Total Part 1	Total Part 2
Hennepin County Total	Offenses	111,630	45,502	66,128
	Clearances	50,175	11,274	38,901
	Clearance Rate	45%	25%	59%
Population 1,138,316	Crime Rate Per 100,000 pop.	9,806	3,997	5,809

Offenses, Clearances, Percent Cleared and Crime Rate by Agency - 2010				
County/City		Grand Total	Total Part 1	Total Part 2
Hennepin County Total	Offenses	107,654	44,349	66,305
	Clearances	49,564	10,773	38,791
	Clearance Rate	46%	24%	61%
Population 1,149,126	Crime Rate Per 100,000 pop.	9,368	3,859	5,509

Offenses, Clearances, Percent Cleared and Crime Rate by Agency - 2011				
County/City		Grand Total	Total Part 1	Total Part 2
Hennepin County Total	Offenses	104,380	44,335	60,045
	Clearances	45,548	10,787	34,761
	Clearance Rate	44%	24%	58%
Population 1,163,613	Crime Rate Per 100,000 pop.	6,855	3,798	3,057

Offenses, Clearances, Percent Cleared and Crime Rate by Agency - 2012				
County/City		Grand Total	Total Part 1	Total Part 2
Hennepin County Total	Offenses	103,625	44,839	58,786
	Clearances	42,800	10,425	32,375
	Clearance Rate	41%	23%	55%
Population 1,163,318	Crime Rate Per 100,000 pop.	8,923	3,861	5,052

*(State of Minnesota, Department of Public Safety, 2009-2012, Bureau of Criminal Apprehension
Minnesota Justice Information Services, Uniform Crime Report.)*

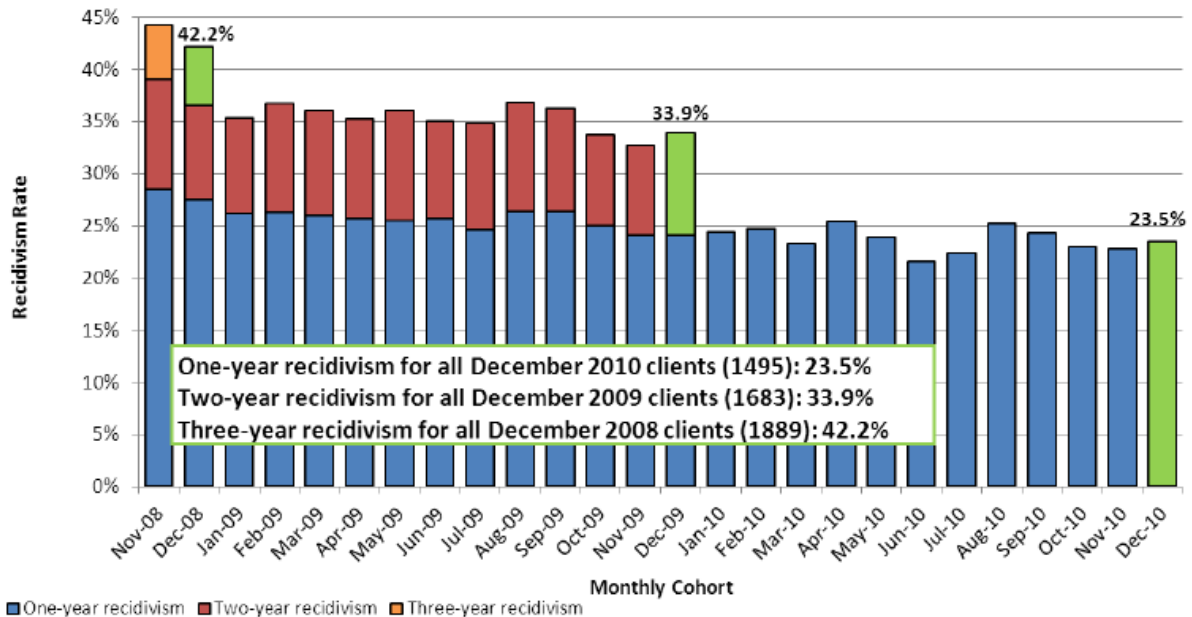
2. Probation/Corrections:

DOCCR has defined recidivism as a conviction (adult) or adjudication (juvenile) within Minnesota for a new offense that occurs after a selected client is sentenced (or disposed) on an initial offense.

1. Recidivism events for juveniles include all adjudications for petty misdemeanor offenses and above. Status and CHIPS cases are excluded.
2. Recidivism events for adults include convictions at the misdemeanor level and above. Petty misdemeanors are excluded.
3. No effort is made to identify out-of-state convictions for adults or juveniles.

Monthly client groups include adults and juvenile and are based on the start date of DOCCR service (i.e., ACF booking, probation/supervised release start, or STS referral) for the governing case.

Recidivism: All Clients



(Contact Tom Merkel, Director of Community Corrections and Rehabilitation Department, 612-348-7962, for more information about this department-specific measure.)

Measure: Percent of Adult Probation Offenders with new felony conviction within 3 years of Discharge (2008 and 2009)

Felony Recidivism	2008	2009
No - Did <u>NOT</u> recidivate	80.8%	84.4%
Yes - <u>DID</u> recidivate	19.2%	15.6%
Total	100%	100%

(Produced by MN Data Definition Team; Department of Corrections Planning & Performance-Research Unit.)

3. & 4. Public Works:

- Hours to plow complete system during a snow event

Year (2 a.m. events only)	Hours to Plow 2005- 2006	Hours to Plow 2006- 2007	Hours to Plow 2007- 2008	Hours to Plow 2008- 2009	Hours to Plow 2009- 2010	Hours to Plow 2010- 2011	Hours to Plow 2011- 2012	Hours to Plow 2012- 2013	Hours to Plow 2013- 2014
Urban	4:28	5	4:41	4:29	4:26	4:36	4.36	4.42	4:54
Rural	4:34	4:36	4:36	4:08	3:41	4:23	4.36	4.36	4:42

(Contact James Grube, Director of Transportation, Public Works Department, 612-596-0307.)

- **Average county pavement condition rating** - Hennepin County roadway system is monitored via an annual inspections program which rates pavements for their ride quality. This data is used by the pavement management system to produce the Pavement Serviceability Rating (PSR). The rating varies from 0.0 (Very Poor) to 5.0 (Very Good).

Year	Percent of Lane Miles Rated "Good" (4.0) or "Very Good" (5.0)
2013	61.9%
2012	60.5%
2011	52.9%
2010	54.3%
2009	46.6%
2008	48.1%
2007	51.5%
2006	49.4%
2005	47.0%
2004	32.6%
2003	28.7%
2002	43.5%
2001	48.5%
2000	51.1%
1999	52.7%
1998	50.6%
1997	44.0%

(Contact James Grube, Director of Transportation, Public Works Department, 612-596-0307.)

5. Public Health:

- **Behavioral Risk Factor Surveillance system rating** (Citizen Survey: excellent, very good, good, fair, or poor)

SHAPE 2010 - Adult Data Book: "Overall Health - In general, would you say your health is:?"

	Sample Size N =	Excellent	Very Good	Good	Fair	Poor
Hennepin County Total	6,933	19.5% ± 1.4	43.7% ± 1.8	27.4% ± 1.6	7.7% ± 0.9	1.7% ± 0.4
Male	2,252	20.1% ± 2.5	44.3% ± 3.0	27.0% ± 2.6	7.2% ± 1.5	1.4% ± 0.8
Female	4,681	18.9% ± 1.7	43.2% ± 2.0	27.8% ± 1.8	8.1% ± 1.1	2.0% ± 0.5

(Contact Jennifer DeCubellis, Assistant County Administrator - Health, 612-596-9416)

No updated information available for health risk until 2015.

6. & 7. Social Services:

- **Workforce participation rate among Minnesota Family Investment Program (MFIP) and Diversionary Work Program (DWP) recipients**
 - Hennepin County's **2010** Work Participation Rate for the MFIP program was 36.2%.
 - The primary measure is whether the family goes on MFIP in the month after DWP. For 2010, 47% of Hennepin families were not on MFIP in the month after DWP eligibility ended.
 - Hennepin County's **2011** Work Participation Rate for the MFIP program is estimated at 39.2%.
 - Hennepin County's **2013** Work Participation Rate for the MFIP program was 37.4%.
 - The primary measure is whether the family goes on MFIP in the month after DWP. For 2013, 50% of Hennepin families were not on MFIP in the month after DWP eligibility ended.
- **Percentage of children where there is NOT a recurrence of maltreatment within 12 months following an intervention**

Who Applied to	Time of Measure	Data Source	Obtained by	Federal or State Target	Jul 2009 - Jun 2010 drawn on 5/20/13	Jul 2010 - Jun 2011 drawn on 5/20/13	Jul 2011 - Jun 2012 drawn on 6/30/13	Jul 2012 - Jun 2013 drawn on 6/30/14
All children who were victims of substantiated child abuse and/or neglect during the reporting period.	12 months	State Measure MN1	SSIS Charting & Analysis	100%	90.4%	89.7%	90.3%	90.7%

(Contact Rex Holzemer, Assistant County Administrator, Human Services and Public Health Department, 612-348-3456.)

8. Taxation:

Level of assessment ratio *(If the median ratio falls between 90% and 105%, the level of assessment is determined to be acceptable.)*

YEAR	MEDIAN RATIO (%)	MEAN RATIO (%)
2013	97.8	101.7
2012	95.4	97.1
2011	95.3	96.9
2010	95.3	97.4
2009	95.0	96.3
2008	95.0	95.9
2007	95.8	96.0
2006	95.9	96.2
2005	95.8	96.3
2004	95.7	96.1
2003	95.9	96.3
2002	95.4	95.6

(Contact James Atchison, County Assessor, 612-348-4567.)

9. Elections:

- **Accuracy of post-election audit** *(Percentage of ballots counted accurately.)*

In 2013, the County Canvassing Board did not conduct a post-election audit (they are only conducted in even years) so there is no change from 2012.

In 2012 — the last even-year election — 13 precincts were randomly selected for audit: All 13 precincts had 100% accuracy.

In 2011, the County Canvassing Board did not conduct a post-election audit (they are only conducted in even years) so there is no change from 2010.

In 2010, the County Canvassing Board randomly selected 13 precincts to be hand counted and compared against the election night machine count. Listed below were the precincts selected and the difference by percentage on how the hand count compared to the election night results.

(Contact Mark Chapin, Resident and Real Estate Services Department. 612-348-5297.)

10. Veterans' Services:

Output Measure: Percent of veterans surveyed who said their questions were answered when seeking benefit information from their County Veterans' Office - 1st Quarter 2011

Question	Strongly Agree	Agree	Disagree	Strongly Disagree	Total Responses
I am able to get what I need at this service location, when I need it.	26%	63%	11%	0%	19
Staff members at this location pay attention to what I say.	57%	43%	0%	0%	21
I have opportunity to make choices that are important to me.	47%	47%	5%	0%	19
The services I receive at this service location make me better able to do the things I want to do now.	45%	50%	5%	0%	20
Staff members give me clear information on the different service choices available to help me.	33%	67%	0%	0%	18
Staff members here clearly explain to me what I need to do next to get the services I need or want.	44%	56%	0%	0%	18

Output Measure: Percent of veterans surveyed who said their questions were answered when seeking benefit information from their County Veterans' Office - 1st Quarter 2012

Question	Strongly Agree	Agree	Disagree	Strongly Disagree	Total Responses
I am able to get what I need at this service location, when I need it.	35%	65%	0%	0%	20
Staff members at this location pay attention to what I say.	35%	65%	0%	0%	20
I have opportunity to make choices that are important to me.	53%	47%	0%	0%	19
The services I receive at this service location make me better able to do the things I want to do now.	45%	55%	0%	0%	20
Staff members give me clear information on the different service choices available to help me.	50%	45%	0%	5%	20
Staff members here clearly explain to me what I need to do next to get the services I need or want.	50%	50%	0%	0%	20

Output Measure: Percent of veterans surveyed who said their questions were answered when seeking benefit information from their County Veterans' Office - 1st Quarter 2013

Question	Strongly Agree	Agree	Disagree	Strongly Disagree	Total Responses
I am able to get what I need at this service location, when I need it.	49%	51%	0%	0%	40
Staff members at this location pay attention to what I say.	69%	31%	0%	0%	39
I have opportunity to make choices that are important to me.	59%	38%	0%	3%	39
The services I receive at this service location make me better able to do the things I want to do now.	51%	49%	0%	0%	37
Staff members give me clear information on the different service choices available to help me.	47%	53%	0%	0%	36
Staff members here clearly explain to me what I need to do next to get the services I need or want.	53%	47%	0%	0%	36

Output Measure: Percent of veterans surveyed who said their questions were answered when seeking benefit information from their County Veterans' Office - 1st Quarter 2014

Question	Strongly Agree	Agree	Disagree	Strongly Disagree	Total Responses
I am able to get what I need at this service location, when I need it.	49%	51%	0%	0%	39
Staff members at this service location pay attention to what I say.	69%	31%	0%	0%	39
I have opportunity to make choices that are important to me.	59%	38%	0%	3%	39
The services I receive at this service location make me better able to do the things I want to do now.	51%	49%	0%	0%	37
Staff members give me clear information on the different service choices available to help me.	47%	53%	0%	0%	36
Staff members here clearly explain to me what I need to do next to get the services I need or want.	53%	47%	0%	0%	36

(Contact Milt Schoen, Director of Veterans Services, Human Services and Public Health Department 612-348-3499.)

11. Library:

- Number of Annual Library Visits per resident

Year	Number of Residents	Library Visits	Visits Per Resident
2013	1,180,138	5,240,918	4.44
2012	1,184,576	5,400,000	4.56
2011	1,152,425	5,856,792	5.08
2010	1,168,983	5,764,193	4.93

(Contact Lois Thompson, Library Director, 612-543-8541.)